

# Technical File



## Contact and General information:

Show Title: Pin Pang

Company: Xabi Larrea

Company Contact: +34 615 745 504 (Xabi)

Technical Contact: +34 652 753 946 (Jon) [tecnica@xabilarrea.net](mailto:tecnica@xabilarrea.net)

Web and Email: [www.xabilarrea.net](http://www.xabilarrea.net), [info@xabilarrea.net](mailto:info@xabilarrea.net)

Post Address: Larruskain Auzoa 3, 48270 Markina Xemein, Bizkaia, Spain

## Stage Area

Stage Dimensions: 9m x 7m x 6m Minimum Area: 6x5x4m

Stage Setting: Italian style.

Main curtain: we would like to use the front curtain. The curtain should be operated from the main control. If the main curtain is only operated from the stage, it has to be done so by a technician from the theatre.

## Sound

1 Sound desk with 5 mono incomings, 2 auxiliar mono senders, prefader and L-R out going.

PA configured for the room+ 2 stage monitor

Sound and light desk have to be next to each other. The control area must have a good view to the stage, if necessary it should be placed in the spectators' area.

The company brings sampler, computer and wireless microphone



## Light

Dimmer of 36 channels (2000w for each one). Minimum 24 channels

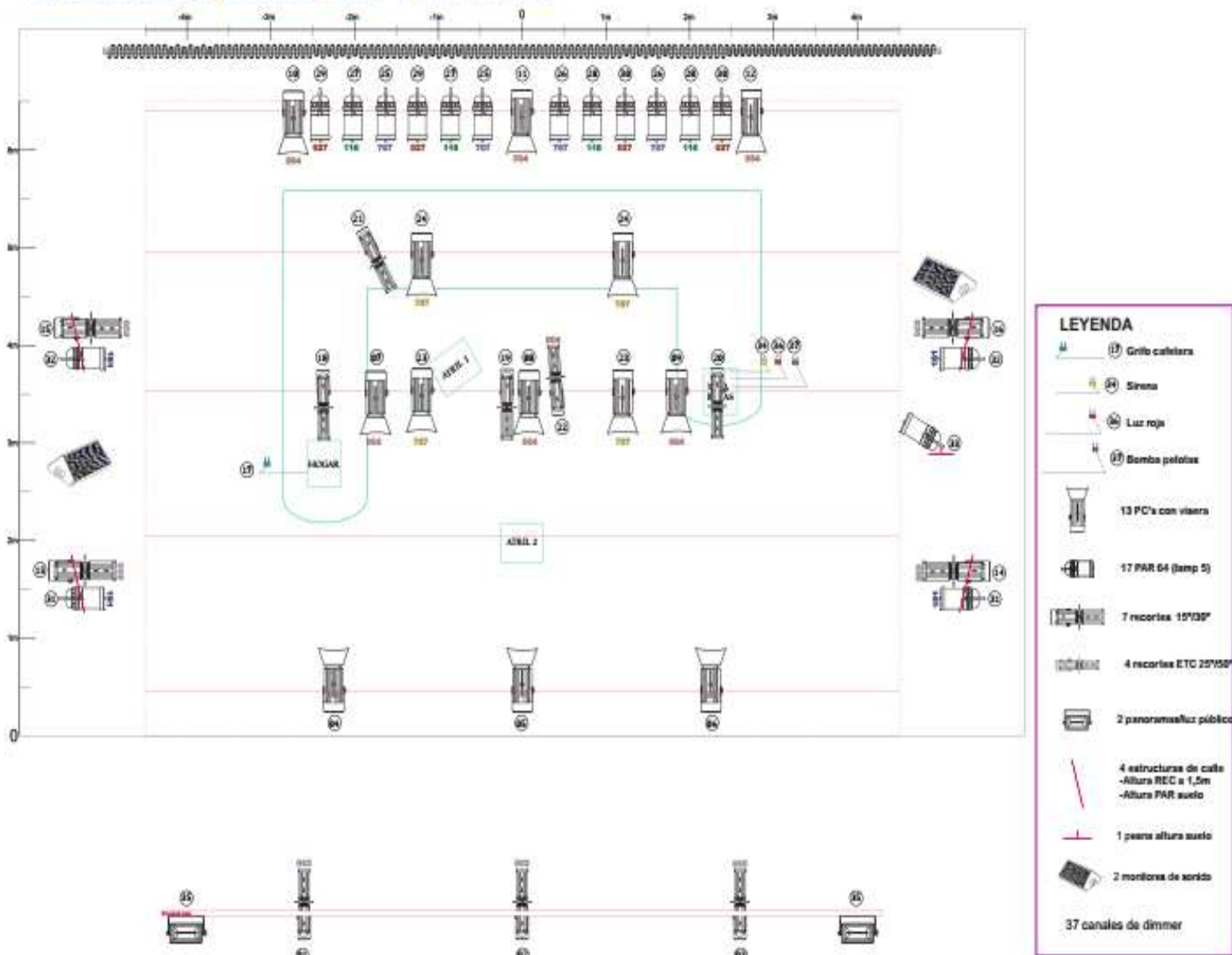
Number of circuits on Stage floor: 13

Room light control from light desk.

The company provides its own light desk

Both the lighting material, as well as the dimmer channels and the structures can be reduced and/or modified according to the possibilities of each space.

### Plano escenario y escenografía "PIN-PANG" XABI LARREA



## Build Up

For the setting up the presenter provides one qualified lighting and sound engineer who is familiar with the local equipment and the venue.

Before the company arrives at the venue, the light and PA must be installed. The technicians from the venue are responsible for the pre-setup.

Estimated time for unload, scenography build up, light set up, atrezzo and sound is 2h.

Estimated time for lighting direction and light desk programm is 2h.

Estimated time for technical rehearsal, adjusts, corrections and warm up is 2h

**Show duration:** 50 min.

Estimated time for dismantling and loading is 1h

## Another Needs

Changing room with WC and shower.

Snacks, like bananas, dried fruits, chocolate, etc. are requested.

Working space must be clean before the buildup.

**Parking:** A safe area for a medium size van must be reserved, for unloading, loading and parking.

### **Accommodation:**

At least a 3 star rating accommodation for two persons has to be arranged by the organisation. Two single room, this can be in a hotel or equivalent. Ideally the accommodation is as close to the venue as possible (walking distance)

### **Food Requirements:**

Meals and dinner for 2 persons

Any change in schedules, stage space, personnel, set-up, equipment... would be agreed between the technical coordinator of the company and the technical head of the venue.



## Company provides

Personal for unloading and loading

Sound and Light technician

Light desk

Filters

Wireless microphone

Sampler

**This technical rider forms an integral part of the contract signed between the Company and the client.**

Please do not hesitate to contact us if something is unclear or if the requirements cannot be met.

